



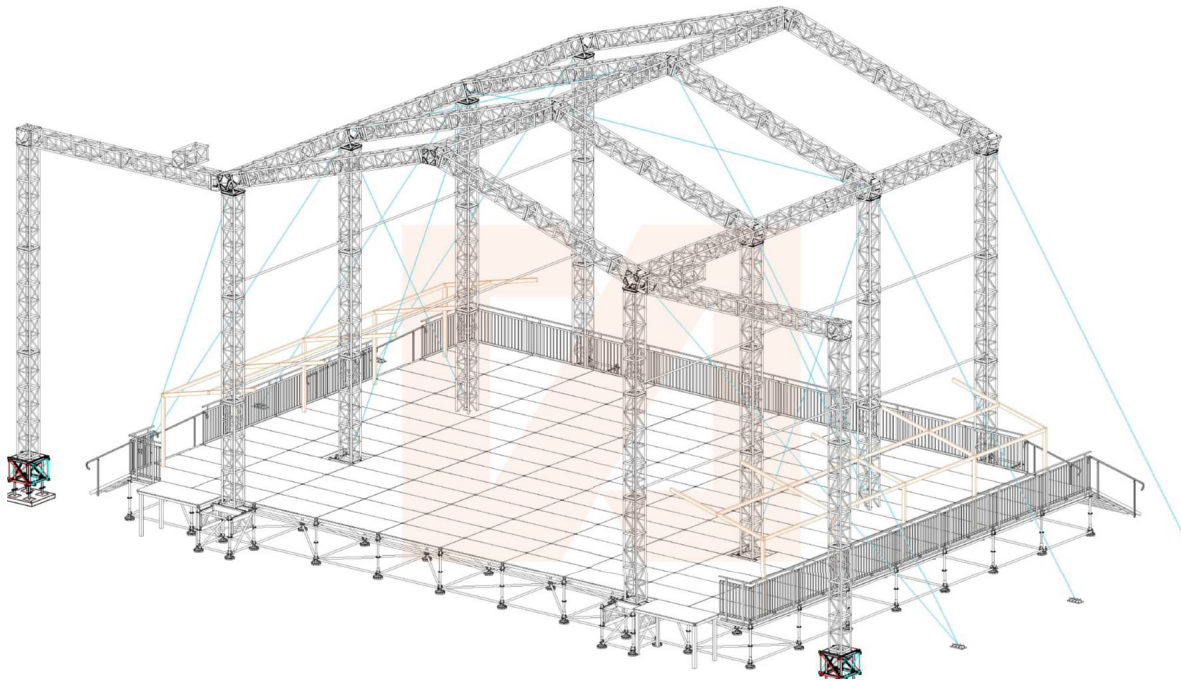
NEXSTAGE



## MATRIX MOTHER GRID ROOF AND STAGE SYSTEM 13M X 15M

The 13m Matrix stage hosts many features that the Australian festival and touring market requires





## 13m Matrix selling points;

- Ideal for large – medium bands, international acts & main stage at festivals
- 182 m<sup>2</sup> of useable stage performance area  
13m x 14m
- Fully integrated cattle shed either side of stage. 72 m<sup>2</sup> of water proof production area.
- 9m trim height.
- Pitched roof design.
- Aluminium structure for minimal terrain impact.
- High wind rating 50km – 100km per hour.  
large load capacity for production rigging.
- PA Hanging arches.
- L.E.D screen hanging arches.
- Quick build time, 1.5 – 2 days.
- Convenient flat pack design to reduce transport costs.
- Erected with crane for speedy construction time.
- Designed, engineered and built in australia.
- Adaptable system with the ability to modify side of stage and back of stage areas to accommodate your needs.
- Helpful qualified staff willing to assist.